

*Ministry of Education, Human Resource Development*

*Dominica*

*Grade 6*  
*National Assessment*  
*May 30, 2019*

**TIME: 90 Minutes**

*Language Arts Paper 1*

**DO NOT TAKE THIS PAPER OUT OF THE EXAMINATION ROOM**

©CMEU/2019

# MINISTRY OF EDUCATION HUMAN RESOURCE DEVELOPMENT

## LANGUAGE ARTS

### INSTRUCTIONS:

READ THE FOLLOWING INSTRUCTIONS BEFORE ATTEMPTING THE TEST.

1. THIS PAPER CONTAINS SIXTY (60) QUESTIONS.
2. YOU HAVE NINETY (90) MINUTES TO COMPLETE THIS PAPER.
3. FOR EACH QUESTION, CIRCLE THE LETTER ON THE ANSWER SHEET THAT  
CORRESPONDS TO THE ANSWER YOU HAVE CHOSEN.
4. USE A PENCIL TO SHADE IN THE CORRECT ANSWER.

### EXAMPLE

1. Which of the following is a noun?

- A. Alvin
- B. Jump
- C. Because
- D. Under

The correct answer is Alvin, letter A. On your answer sheet you shade



B

C

D

If there is a need to change your answer, erase it and circle your new answer.

5. IF YOU ARE UNABLE TO ANSWER A QUESTION LEAVE IT AND MOVE ON TO THE NEXT  
QUESTION. YOU WILL RETURN TO IT LATER IF THERE IS AVAILABLE TIME.

## USAGE/GRAMMAR

### CHOOSE THE LETTER THAT CORRESPONDS WITH THE GRAMMATICAL ERROR FOUND IN QUESTIONS 1 – 2.

1. Between you and I, there are gazeboes behind the hotel.  
A                      B    C                      D
2. If you walk slow, you'll surely be late for school.  
A                      B            C                      D
3. Select the sentence that is grammatically **correct**.
  - A. I did not eat nothing for dinner last night.
  - B. I did eat anything for dinner last night.
  - C. I ate nothing for dinner last night.
  - D. I didn't have nothing for dinner last night.

### CHOOSE THE WORDS THAT BEST COMPLETE THE SENTENCES IN QUESTIONS 4 - 8.

4. Is this the girl \_\_\_\_\_ you saw last night?
  - A. whose
  - B. who
  - C. which
  - D. whom
5. Kevin has \_\_\_\_\_ the ball.
  - A. catched
  - B. catches
  - C. caught
  - D. caughts

6. There \_\_\_\_\_ many melons in the garden.
- A. were
  - B. was
  - C. is
  - D. has
7. They burnt \_\_\_\_\_ in the fire.
- A. themselves
  - B. itself
  - C. theirselves
  - D. ourselves
8. The Sisserou Parrot ate \_\_\_\_\_ seeds in the treetops.
- A. their
  - B. it's
  - C. theirs
  - D. its
9. Which sentence is **correctly** written in **indirect speech**?
- A. Mother shouted, Maisie, return these cracked eggs to the grocer.
  - B. Mother told Maisie, "return the cracked eggs to the grocer."
  - C. Mother told Maisie to return the cracked eggs to the grocer.
  - D. "Return these cracked eggs to the grocer," mother shouted to Maisie.
10. Choose the **correctly punctuated** sentence below.
- A. We knew what to do we had done it, so many times before.
  - B. We knew what to do we had done it; so many times before.
  - C. We knew what to do. we had done it so many times before.
  - D. We knew what to do; we had done it so many times before.

## **SPELLING**

CHOOSE THE LETTER THAT CORRESPONDS WITH THE  
**WRONGLY SPELT** WORDS IN QUESTIONS 11 – 13.

11. The wreath was antique and extremely valueable.  
A B C D
12. Our modern comunnty hospital is equipped with an operating theatre.  
A B C D
13. Previously, patients travelled to the city for surgary.  
A B C D

CHOOSE THE WORDS, WHICH ARE **SPELT INCORRECTLY** IN  
**QUESTIONS 14 - 15.**

14. A. attractive  
B. luggage  
C. knowledgable  
D. knee
15. A. relief  
B. believe  
C. experience  
D. recieve

**SELECT THE CORRECTLY SPELT WORDS TO COMPLETE THE  
SENTENCES IN QUESTIONS 16 – 18.**

16. Would you like ice-cream as a \_\_\_\_\_?
- A. desert  
B. disert  
C. dessert  
D. dissert

17. The closing of the museum is only \_\_\_\_\_.
- A. temporery
  - B. temporary
  - C. temporory
  - D. temparory
18. I hurt the \_\_\_\_\_ on my hand when I fell off my bike?
- A. nuckels
  - B. knukles
  - C. knuckles
  - D. nukles

### **VOCABULARY**

**SELECT THE WORDS WHICH ARE CLOSEST IN MEANING TO THE UNDERLINED WORDS IN QUESTIONS 19 – 22.**

19. The thief is going to **compel** the lady to give him her purse.
- A. ask
  - B. force
  - C. wish
  - D. help
20. This meat is green, **decayed** and smells moldy.
- A. rotten
  - B. tasty
  - C. old
  - D. awful

21. He was a very **valiant** soldier and deserved the medal awarded to him.

- A. brave
- B. clever
- C. cowardly
- D. ignorant

22. Dominica is the first climate **resilient** nation in the region.

- A. friendly
- B. weak
- C. prepared
- D. resistant

23. The principal punished Jeremy for his **insolent** behavior.

- A. rude
- B. lazy
- C. good
- D. model

**CHOOSE THE WORD THAT CAN BE USED TO REPLACE THE  
UNDERLINED PHRASES FOUND IN QUESTIONS 24 – 25.**

24. The soil had been **washed away** by the rain.

- A. fertilized
- B. laundered
- C. ploughed
- D. eroded

25. He is a **man who loves money but hates to spend.**

- A. martyr
- B. spendthrift
- C. miser
- D. benefactor

26. Choose the word from the options below that could **BEST** replace the word **NICE** in the sentence below.

She is a **nice** person who is always willing to help others.

- A. fashionable
- B. kind
- C. pretty
- D. polite

**CHOOSE THE WORDS THAT ARE OPPOSITE IN MEANING TO THE UNDERLINED WORDS IN QUESTIONS 27 – 28.**

27. The soldiers were ordered to **advance upon** the enemy.

- A. proceed from
- B. walk towards
- C. progress towards
- D. retreat from

28. Tony's good behavior **infuriated** the teacher.

- A. angered
- B. shocked
- C. pleased
- D. frightened

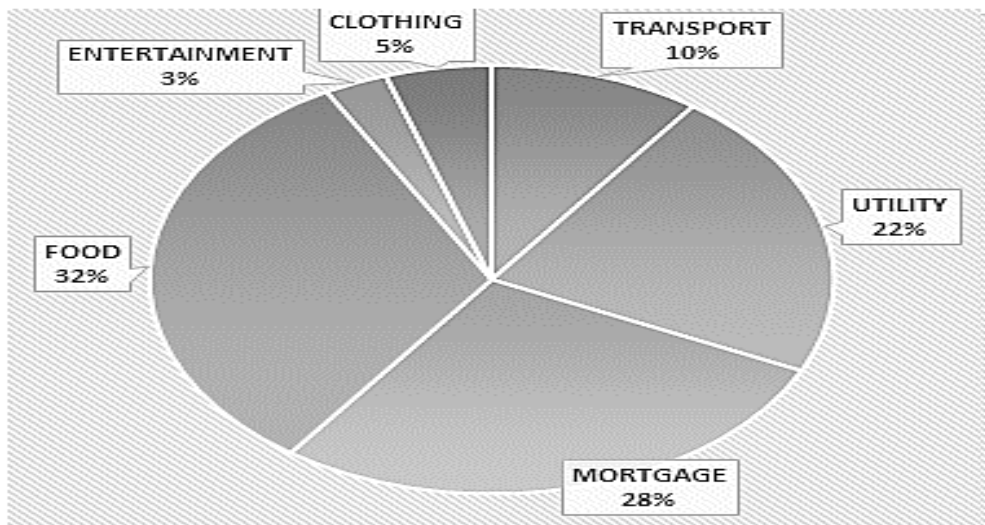


## STUDY SKILLS

29. Which of the following words **WILL NOT** be found between the guidewords *lift* and *like*?

- A. light
- B. limit
- C. ligament
- D. lightning

THE PIE CHART SHOWS THE MONTHLY EXPENSES OF RITA'S FAMILY. STUDY IT CAREFULLY AND ANSWER QUESTIONS 30 - 31.



30. What percentage is spent on entertainment each month?

- A. 3%
- B. 5%
- C. 22%
- D. 32%

31. The largest portion of the family's income is spent on

- A. food
- B. mortgage
- C. utility
- D. transport

32. Study the excerpt shown below and answer the question that follows.

**A**

**Acid Rain** (as ihd rayn) rain that carries certain kinds of pollution.

**Adapt** (uh dapt) to change in order to survive in new environments

The above was taken from which part of a text book?

- A. index
- B. glossary
- C. Table of Contents
- D. References

33. Study the dictionary entry for “**KNOT**” below to answer the question that follows.

*n. 1. A fastening made by looping string.*

*v. 2. To make a knot in*

*n. 3. A small hard spot in a piece of wood.*

*n. 4. The unit for measuring the speed of a ship.*

I like to see the dining table although there are a few small **knots** in it.

Which of the following **BEST** defines the word knot in the sentence above?

- A. definition 1
- B. definition 2
- C. definition 3
- D. definition 4

**USE THE EXCERPT BELOW TO ANSWER QUESTIONS 34 - 36.**

	PAGE
CHAPTER 1 MEASUREMENT.....	5
CHAPTER 2 WATER.....	12
CHAPTER 3 OUR SOLAR SYSTEM.....	17
CHAPTER 4 OUR PLANET EARTH.....	27
CHAPTER 5 MAN AND SPACE.....	36
CHAPTER 6 LIVING THINGS- THEIR FOOD.....	45

34. This page is most likely part of a \_\_\_\_\_ textbook.
- A. Health and Family Life
  - B. Language
  - C. Mathematics
  - D. Science
35. In which chapter would you find information on various planets?
- A. Chapter 5
  - B. Chapter 4
  - C. Chapter 3
  - D. Chapter 1
36. How many pages are there with information about Man and Space?
- A. 45
  - B. 36
  - C. 10
  - D. 9

## **SECTION 2**

### **COMPREHENSION**

#### **INSTRUCTIONS**

- This section contains 4 passages and 24 questions
- Read each passage carefully and answer the questions that follow
- If you do not know an answer, leave it and move on to the next.

You may return to the ones you missed if you have more time.

**READ THE PASSAGE BELOW AND ANSWER QUESTIONS 37-42**

**HEALTH IMPROVEMENT**

Apply for a nursing course

At

**SIGNAL MEDICAL HOSPITAL**

To

Improve people's health.

Contact

Hal Benny's Office

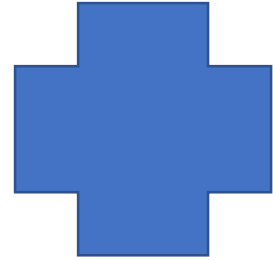
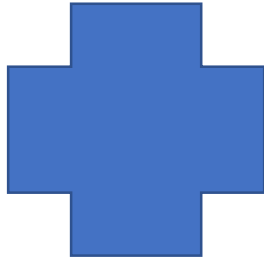
June 1 – 31, 2019

for application forms.

Available for males and females

21–30 years

*Certificate prepares you for employment at any **leading** hospital in the country.*



37. From the advertisement the term “**leading**” means
- A. private
  - B. new
  - C. recognized
  - D. local
38. The application forms are available at
- A. Hal Benny's Office
  - B. Signal Nursing Hospital
  - C. any leading hospital
  - D. the certification office

39. Which of the following is **NOT** implied in the advertisement?
- A. At the end of the course one will receive a certificate
  - B. Both men and women can apply for the course
  - C. The course prepares one for a job outside of the country
  - D. There is a time limit for availability of applications
40. SIGNAL MEDICAL HOSPITAL
- A. is the best hospital on the island
  - B. offers applications for jobs in hospitals
  - C. makes the course available
  - D. is a leading hospital
41. The **main purpose** of the advertisement is to
- A. inform us about health facilities
  - B. invite applications for a nursing course
  - C. promote health in the country
  - D. advertise the school's program
42. Based on the advertisement, which of the following is true?
- A. This advertisement encourages people to do the course.
  - B. This is a health advertisement.
  - C. People are informed about nursing.
  - D. People can learn to improve their health.

### READ THE PASSAGE BELOW AND ANSWER QUESTIONS 43 - 48

There is scarcely a country in the world that does not have its festival of lights – a time of colour and gaiety, marking the triumph of good over evil and the beginning of a new year. This is the theme of the great Hindu festival of Deepavali or Divali, celebrated widely in South-East Asia. Deepam means “lamp” and vali means “row” or “line” – thus a line of lights in homes, at the front of houses, and along streets to banish darkness.

One of the most popular of the Deepavali legends ascribes its beginnings to the triumphant return of Prince Rama to his city of Ayodhya to rule his country, after fourteen years of exile in the jungle. The people filled their city with lights to welcome their lord after the defeat of Ravana, the “Evil One” – symbolizing the triumph of the light and righteousness. Linked with the festival also is the victory of Lord Krishna over the wicked King. As he lay dying, the king asked Krishna for a favour – He asked that the event be celebrated each year with the people bathing and putting on new clothes.

For centuries, Deepavali has been a time of rejoicing in India, especially for children. There are toys and firecrackers. There are gifts and food for the poor. Incense is burnt, and traditional religious drawings are part of the elaborate ceremonies.

43. What favour did the King ask of Lord Krishna?
- A. To celebrate Deepavali
  - B. That people bathe and wear new clothes to celebrate
  - C. To forgive his wickedness
  - D. To help the poor during the Deepavali celebration

44. What is the **meaning** of Deepavali?
- A. The light
  - B. The Row
  - C. Line of lights
  - D. Light in homes
45. According to the legends, Deepavali began
- A. upon Prince Rama's return from exile
  - B. when Rama defeated Ravana
  - C. when light and righteousness triumphed
  - D. centuries ago
46. Which of the following sentence is **NOT** true about the Deepavali celebrations?
- A. Children are not allowed to take part.
  - B. Gifts are given to the poor
  - C. It has been celebrated for centuries in India
  - D. Religion plays a part in the celebrations
47. What is the **theme** of the Hindu festival Deepavali?
- A. welcome of Lord Rama
  - B. a line of lights in homes
  - C. the triumph of good over evil
  - D. a time to rejoice
48. What is the **main idea** in this passage?
- A. How Deepavali originated and is celebrated
  - B. The life of Krishna
  - C. The triumph of good over evil
  - D. Deepavali, a time to rejoice



**READ THE POEM AND ANSWER QUESTIONS 49 - 54**

<b>WHO MADE A MESS</b>	
1	Who made a mess of the planet
2	And what's that bad smell in the breeze?
3	Who punched a hole in the ozone
4	And who took an axe to my trees?
5	Who sprayed the garden with poison
6	While trying to scare off a fly?
7	Who stroked the water with oil slicks
8	And who let my fish choke and die
9	Who tossed that junk in the river
10	And who stained the fresh air with fumes?
11	Who tore the fields with a digger
12	And who blocked my favourite views?
13	Who's going to tidy up later
13	And who's going to find what you've lost?
14	Who's going to say that they're sorry
15	And who's going to carry the cost?
<i>Steve Turner</i>	

49. Which line in the poem is asking about cutting down forests?

- A. Line 4
- B. Line 5
- C. Line 10
- D. Line 12

50. The last line is asking who is going to
- A. accept responsibility for these actions
  - B. pay all the money to clean up the planet
  - C. find the money to clean up the planet
  - D. carry the rubbish and mess to clean it away
51. What literary device is used in **line 3**?
- A. simile
  - B. personification
  - C. metaphor
  - D. alliteration
52. What do you think the poet wants people to do?
- A. Find answers to all the questions
  - B. Ask more questions
  - C. Go out and clean up
  - D. Think carefully about their actions
53. What is the poem about?
- A. rubbish
  - B. environment
  - C. religion
  - D. gardening
54. Consider the phrases, “my trees”, “my fish”, and “my favourite views”. Who is speaking in the poem?
- A. a farmer
  - B. an environmentalist
  - C. God, the Creator
  - D. Steve Turner

**READ THE STORY BELOW AND ANSWER QUESTIONS 55 - 60**

The water was glistening in the summer's morning sunlight, the waves were cool on their feet as Larky, and Paula happily strolled along the water's edge. Collecting shells and looking at stones as they went, the brother and sister were having a ball exploring what appeared to be a never-ending beach.

After a while, they stopped and looked back. Their parents and the umbrellas, chairs, and crowds were a long way off. But just ahead, nestled amongst sea grape trees, stood a run-down house. It appeared to be unoccupied; curious, they went to investigate. The steps creaked as they ascended them, as did the porch when they stepped onto it. The shutters and porch railing were weathered and broken. The front door was ajar so they squeezed through and cautiously entered.

The place was in total disarray, **chockablock** with dust, sand, dead leaves, and overturned, splintered furniture. They had taken but a few steps when the door unexpectedly slammed shut behind them. Startled, Larky and Paula spun around. Before they could even utter something like "Uh-oh," the window shutters clapped closed, too. And if this wasn't scary enough, the stairs to the second floor squeaked. When a light in the back bedroom flickered, that was absolutely the final straw.

"Let's get outta here, Paula!" Out they ran, all the way back to those wonderful umbrellas, beach chairs, and crowds.

55. Who was telling the story?

- A. Larky
- B. Paula
- C. a narrator
- D. a ghost

56. Which event happened last in the story?

- A. The door slammed
- B. The children strolled
- C. The windows clapped
- D. The light flickered

57. All these words can be used to describe the main characters **EXCEPT**
- A. naughty
  - B. inquisitive
  - C. nosy
  - D. curious
58. Things that are **chockablock** are
- A. full of blocks
  - B. crowded together
  - C. run down
  - D. broken up
59. Where did the story take place?
- A. in the woods
  - B. on the beach
  - C. by the lake
  - D. in the park
60. Which title **BEST** suits this story?
- A. The Family Picnic
  - B. The Inquisitive Children
  - C. The Disobedient Children
  - D. The chockablock Room

***END OF EXAMINATION***

*Ministry of Education and Human Resource Development*  
*Dominica*

*National Assessment*  
*May 31, 2019*

**TIME: 90 Minutes**

*Mathematics*

**INSTRUCTIONS:**

**READ THE FOLLOWING INSTRUCTIONS BEFORE ATTEMPTING THE TEST.**

1. THIS PAPER CONTAINS SIXTY (60) QUESTIONS.
2. YOU HAVE NINETY (90) MINUTES TO COMPLETE THIS PAPER.
3. FOR EACH QUESTION, SHADE THE LETTER ON THE ANSWER SHEET THAT CORRESPONDS TO THE ANSWER YOU HAVE CHOSEN.

**EXAMPLE**

1. What is the **place value** of the **6** in the number 65 432 represent?  
A. Tens of thousands  
B. thousands  
C. hundreds  
D. ones

The correct answer is **tens of thousands**, letter **A**. On your answer sheet you shade

A                      B                      C                      D



If there is a need to change your answer, erase it and circle your new answer.

4. USE A PENCIL TO SHADE IN THE CORRECT ANSWER.

**NO CALCULATORS ALLOWED.**

## NUMBER CONCEPTS AND OPERATIONS

1. What is the value of the underlined digit in 284 931?

- A. 8
- B. 80
- C. 8 000
- D. 80 000

Use the following table to answer Questions 2 and 3.

ISLAND	POPULATION
Dominica	70 245
St. Lucia	917 257
Grenada	90 246
St. Kitts & Nevis	89 569
Barbados	2553

2. Which of the following island's population is a multiple of 5?

- A. Barbados
- B. Dominica
- C. St. Lucia
- D. St. Kitts and Nevis

3. Which two islands' population, rounded off to the nearest 1000 would be the same?

- A. Dominica and Grenada
- B. St. Lucia and St. Kitts and Nevis
- C. St. Kitts & Nevis and Grenada
- D. St. Lucia and Barbados

4. How many 100's is there in 10 000?
- A. 1 000 000
  - B. 9 900
  - C. 100
  - D. 2
5. The highest common factor of 30 and 50 is
- A. 15
  - B. 10
  - C. 6
  - D. 5
6. The number of spectators at an international football match is 3 125 000.  
This number written in words is
- A. Three thousand, one hundred and twenty-five million
  - B. Three hundred thousand, one hundred and twenty-five.
  - C. Three million, one hundred and twenty-five thousand
  - D. Three thousand, one hundred and twenty-five thousand
7. Which of the following numbers placed in the blank, makes the statement below true?
- \_\_\_\_\_ < 1 390 876
- A. 1 398 001
  - B. 1 409 540
  - C. 1 289 799
  - D. 1 395 760



8.  $632 + 728 + 1\,240 =$

- A. 2 600
- B. 2 700
- C. 2 500
- D. 2 590

9. The sum of 2 356 and 31 097 is

- A. 31 341
- B. 33 453
- C. 53 343
- D. 54 657

10.  $600 \times 1 \times 0$  is

- A. 60010
- B. 6000
- C. 600
- D. 0

11.  $7\,001 - 465 =$

- A. 6 563
- B. 6 635
- C. 6 536
- D. 6 356

12. What number is 1 000 000 less than 3 500 000?

- A. 2 500 000
- B. 3 400 000
- C. 2 400 000
- D. 4 900 000

Use the list below to answer Question 13.

**Town X:** 6 134

**Town Y:** 4 288

**Town Z:** 3 990

13. The list above shows the number of visitors from Towns **X**, **Y** and **Z** who visited Town **A**.

**Approximately** how many visitors came to **Town A** altogether?

- A. 12 500  
B. 13 000  
C. 13 500  
D. 14 000
14. Which method is correct in finding the **dividend** in the number sentence below?

$$\boxed{\phantom{000}} \div 8 = 111 \text{ remainder } 1,$$

$\boxed{\phantom{000}}$  is

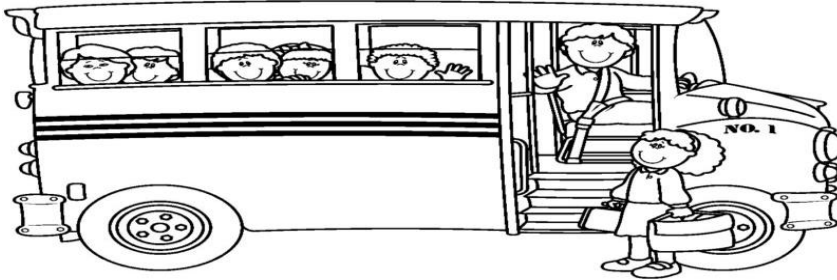
- A.  $(111 \times 8) \times 1$   
B.  $(111 \times 8) + 1$   
C.  $(111 + 1) \times 8$   
D.  $(8 \times 1) + 111$
15. Which statement below is the **BEST** estimate of  $265 \div 18$ ?
- A.  $200 \div 20$   
B.  $300 \div 10$   
C.  $270 \div 20$   
D.  $270 \div 10$

16. Ana ran 8 rounds of a track in the morning and 10 rounds in the afternoon. If she did this every day for 2 weeks, which number sentence shows the total number of rounds she ran altogether?



- A.  $8 + 10 = \square$
- B.  $(8 + 10) \times 2 = \square$
- C.  $(8 + 10) \times 14 = \square$
- D.  $(8 + 10) + 2$
17. In a cricket match, Matt scored 101 runs in the first inning and 67 in the second. What was Matt's average score?
- A. 168
- B. 101
- C. 84
- D. 34
18. If four times a child's age is equal to 40, then the child's age is
- A. 10
- B. 8
- C. 6
- D. 5

19. A group of 59 students and 5 teachers are going on a trip. Each bus can hold 9 students and 1 teacher. How many buses are needed to go on the trip?



- A. 5  
B. 6  
C. 7  
D. 8
20. Last week, a ferry made 16 trips with 520 passengers each time. How many passengers were transported last week?
- A. 3 540  
B. 3 646  
C. 8 226  
D. 8 320
21. How many poles are needed to fence a distance of 144m, if the poles are placed 12 m apart from each other?
- A. 12  
B. 13  
C. 14  
D. 11

22. An airplane flew at 36 100 feet for most of its trip. A large jet flew 1 500 ft above it. How high was the jet flying?

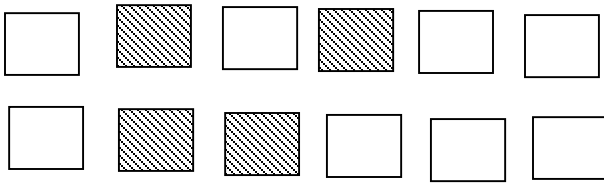


- A. 37 600  
B. 34 600  
C. 22 600  
D. 7 500
23. During the Easter vacation, Jason read 541 pages in his favorite book. He wanted to reach his goal of 650 pages. How more pages does he need to read?
- A. 199  
B. 119  
C. 111  
D. 109

### **FRACTIONS AND DECIMALS**

24. There are 30 red and blue marbles in a container. If  $\frac{2}{3}$  of them are red, how many marbles are blue?
- A. 3  
B. 10  
C. 15  
D. 20

25. In the diagram below, the shaded portion is represented by the fraction



- A.  $\frac{2}{5}$
- B.  $\frac{12}{4}$
- C.  $\frac{4}{6}$
- D.  $\frac{1}{3}$
26. Which of the following fractions below is **NOT** equivalent to the others?

- A.  $\frac{3}{15}$
- B.  $\frac{1}{4}$
- C.  $\frac{5}{20}$
- D.  $\frac{2}{8}$

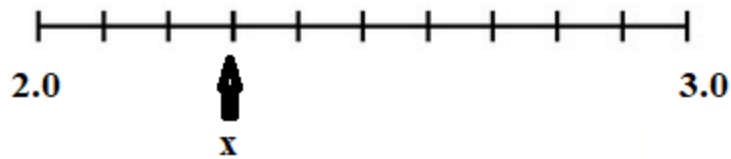
27. The place value of **7** in the decimal **0.7** is

- A. tens
- B. ones
- C. tenths
- D. Hundredths

28. Which of the following decimals is the same as  $1\frac{1}{2}$ ?

- A. 11.2
- B. 3.2
- C. 1.5
- D. 1.2

29. The letter X in the number line shown below represents the decimal



- A. 23.0
- B. 2.3
- C. 2.03
- D. 0.23

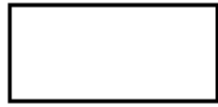
### **GEOMETRY**

30. Each angle in an equilateral triangle measures

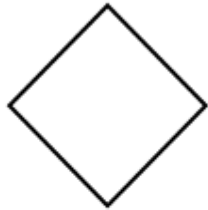
- A. 360 degrees
- B. 180 degrees
- C. 90 degrees
- D. 60 degrees

31. Which one of the following diagrams represents a rhombus?

A.



B.



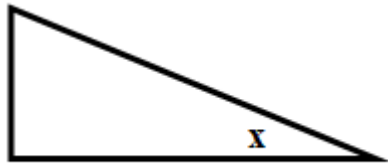
C.



D.



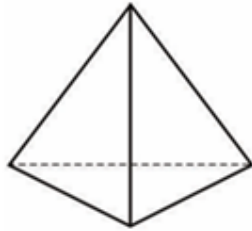
32. The angle marked X in the triangle shown below is a/an



- A. acute angle
- B. straight angle
- C. right angle
- D. obtuse angle



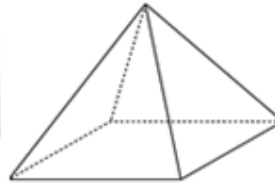
33. Which of the following solids is a square - based pyramid?



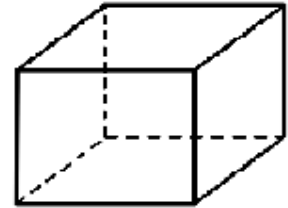
**A**



**B**



**C**



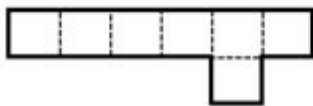
**D**

34. Which pair of solids have the following properties;

**6 faces, 12 edges, and 8 vertices?**

- A. cube and cylinder
- B. cuboid and cone
- C. cylinder and cone
- D. cube and cuboid

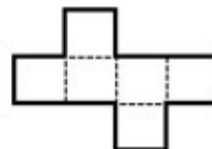
35. Which one of the following below is **NOT** an example of a net for a cube?



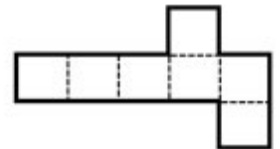
**A**



**B**



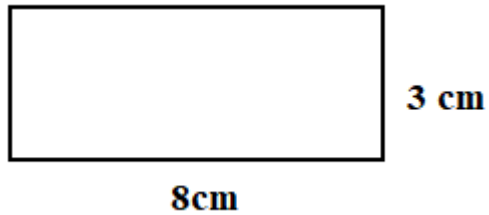
**C**



**D**

## MEASUREMENT

36. What is the perimeter of the shape shown below?

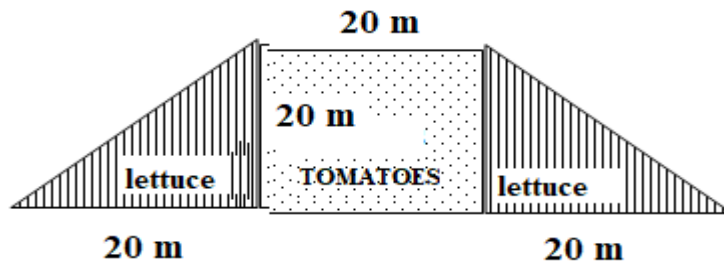


- A. 11 cm  
B. 22 cm  
C. 24 cm  
D. 27 cm
37. 75 cm is cut off from a piece of fabric 2 metres long. What length of the fabric remains?
- A. 25 cm  
B. 75 cm  
C. 125 cm  
D. 175 cm
38. The area of a basketball court would most likely be measured in
- A.  $\text{mm}^2$   
B.  $\text{cm}^2$   
C.  $\text{m}^2$   
D.  $\text{km}^2$

39. The area of the irregular shape shown below is **approximately**



- A.  $84 \text{ cm}^2$   
 B.  $25 \text{ cm}^2$   
 C.  $20 \text{ cm}^2$   
 D.  $14 \text{ cm}^2$
40. Mrs. Brown grows tomatoes and lettuce in her backyard garden, as shown in the diagram below.



What is the area of the **entire** garden?

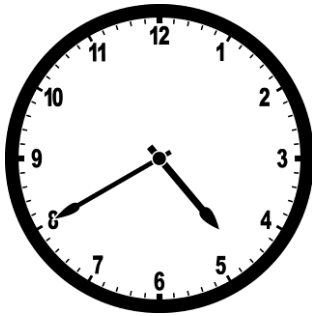
- A.  $80 \text{ m}^2$   
 B.  $120 \text{ m}^2$   
 C.  $800 \text{ m}^2$   
 D.  $1200 \text{ m}$

41. The capacity of a large Trois Pitons bottle of water is 1.5 litres (L). What is its capacity in millilitres (ml)?



- A. 1.5 ml  
B. 15 ml  
C. 150 ml  
D. 1500 ml
42. The mass of a car is best measured in
- A. grams  
B. kilograms  
C. ounces  
D. kilometres
43. Ms. Charles used 1.5 kg of flour from a 5 kg bag to bake some cupcakes. How much flour was left in the bag?
- A. 3.5 g  
B. 6.5 g  
C. 3 500 g  
D. 6 500 g

44. What time is shown on the clock below?


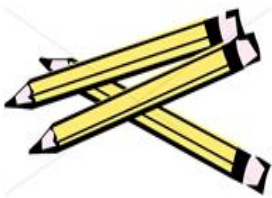




- A. 20 minutes to 5  
B. 8 minutes to 5  
C. 20 minutes to 6  
D. 40 minutes to 6
45. A bus left Roseau at 2:30 pm and arrived at Castle Bruce 35 minutes later. At what time did it arrive at Castle Bruce?
- A. 3:05 pm  
B. 3:15 pm  
C. 4:15 pm  
D. 4:45 pm
46. It took Karen and Phil 1 hour to wash 12 cars. How many hours will it take them to wash 60 cars?



- A. 3  
B. 5  
C. 6  
D. 8

47. Which one of these pencils sets is the best-packaged deal?

			
2 for \$ 0.75	3 for \$0.90	4 for \$1.00	5 for \$1.20
A	B	C	D

48. Use the price list below to answer the following question.

		
<b>\$3.50</b>	<b>\$2.00</b>	<b>\$4.00</b>

How much change would Joan receive from a \$10.00 note, if she bought each item on the menu?

- A. \$0.50
- B. \$1.00
- C. \$8.50
- D. \$9.50

49. Digicel is offering customers a 10% discount on cell phones. How much would David pay if he decides to buy the phone shown below?



- A. \$432  
B. \$470  
C. \$490  
D. \$528
50. Mrs. Andrew bought a box of pens for \$20.50. There were 12 pens in the box. She sold each pen for \$2.75. She made a
- A. loss of \$12.50  
B. loss of \$17.75  
C. profit of \$12.50  
D. profit of \$2.75

### **STATISTICS AND DATA HANDLING**

51. Grade 6A wanted to find out the shoe sizes of the students in the classroom. Which of these would be **BEST** to collect the data at first?
- A. Tally chart  
B. Bar graph  
C. Pictograph  
D. Pie chart

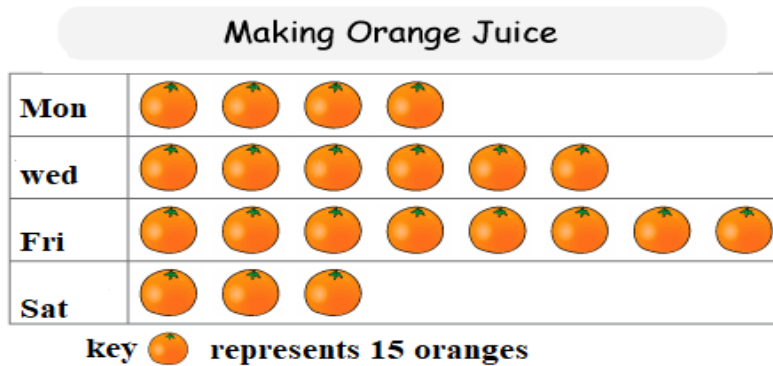
52. What is the **mode** of the following set of numbers?

4, 5, 16, 1, 16, 4, 4, 1
--------------------------

- A. 1
- B. 4
- C. 5
- D. 16

**Use the illustration below to answer Questions 53 – 54**

The diagram below was created by John to show the number of oranges he picked to make orange juice.



53. The diagram above is an example of a

- A. Tally chart
- B. Bar graph
- C. Pictograph
- D. Pie chart

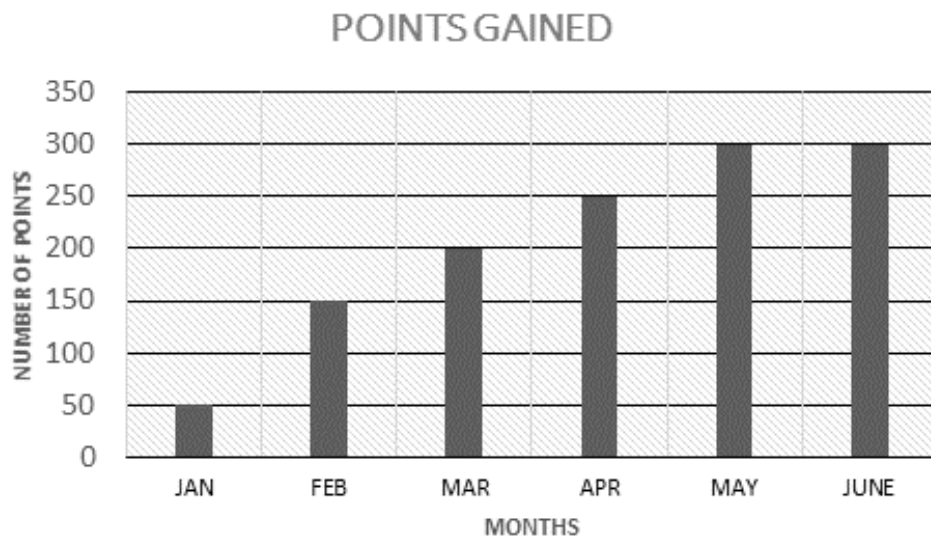


54. How many oranges did John pick on Saturday?

- A. 315
- B. 45
- C. 15
- D. 3

**Use this graph to answer Questions 55 and 56**

THE GRAPH BELOW SHOWS JOSEPH'S HIGHEST POINTS GAINED ON A COMPUTER GAME OVER A PERIOD OF 6 MONTHS.



55. How many points did Joseph **gain** from May to June?

- A. 300
- B. 200
- C. 50
- D. 0

56. During which two months did his score increase the **MOST**?

- A. May to June
- B. Jan to Feb
- C. Mar to Apr
- D. Feb to Mar

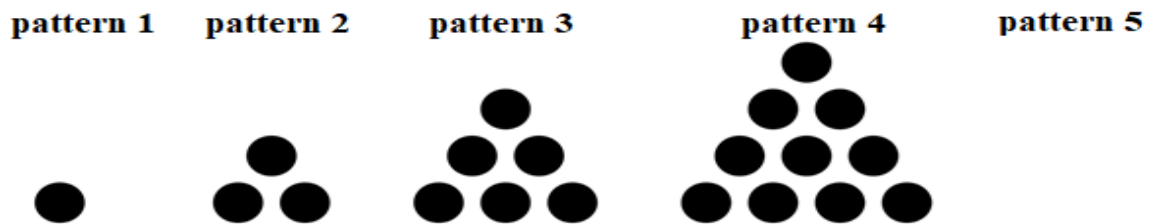
**PATTERNS FUNCTIONS AND ALGEBRA**

57. What is the next number in the sequence?

**64, 49, 36, \_\_\_\_\_, 16**

- A. 23
- B. 24
- C. 25
- D. 26

58. Study the pattern below to answer the question.



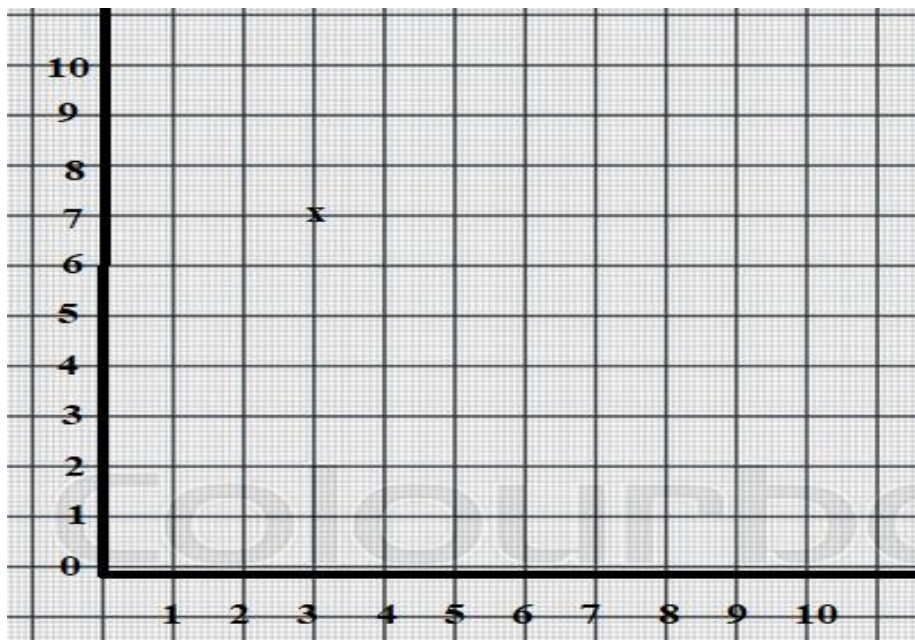
How many **MORE** dots should there be in **pattern 5** than **pattern 4**?

- A. 5
- B. 6
- C. 15
- D. 21

59. If  $X = 3$ ,  $Y = 5$  and  $Z = 8$  ; find  $3Y + 4X - Z$

- A. 72
- B.  $7XYZ$
- C. 27
- D. 19

60. Study the graph below and answer the question that follows.



Which ordered pair is represented by point  $x$ ?

- A. (10,10)
- B. (7,3)
- C. (3,7)
- D. (3,10)

***END OF EXAMINATION***

*Ministry of Education & Human Resource Development*

*Grade 6*  
*National Assessment*  
*May 31, 2019*

**TIME: 75 Minutes**

**DO NOT TAKE THIS PAPER OUT OF THE EXAMINATION ROOM**

©CMEU/2019

*Science and Technology*

# MINISTRY OF EDUCATION AND HUMAN RESOURCE DEVELOPMENT.

## **INSTRUCTIONS**

**READ THE FOLLOWING INSTRUCTIONS BEFORE ATTEMPTING THE TEST.**

1. THIS PAPER CONTAINS 50 QUESTIONS.
2. FOR EACH QUESTION, CIRCLE THE LETTER ON THE ANSWER SHEET THAT MATCHES THE ANSWER YOU HAVE CHOSEN.
3. USE A PENCIL TO SHADE IN THE CORRECT ANSWER.

### **EXAMPLE:**

1. Which object is most likely to float in a container of water?

- A. leaf
- B. key
- C. pen
- D. coin

The correct answer is leaf, letter A. on your answer sheet you mark:



B.

C.

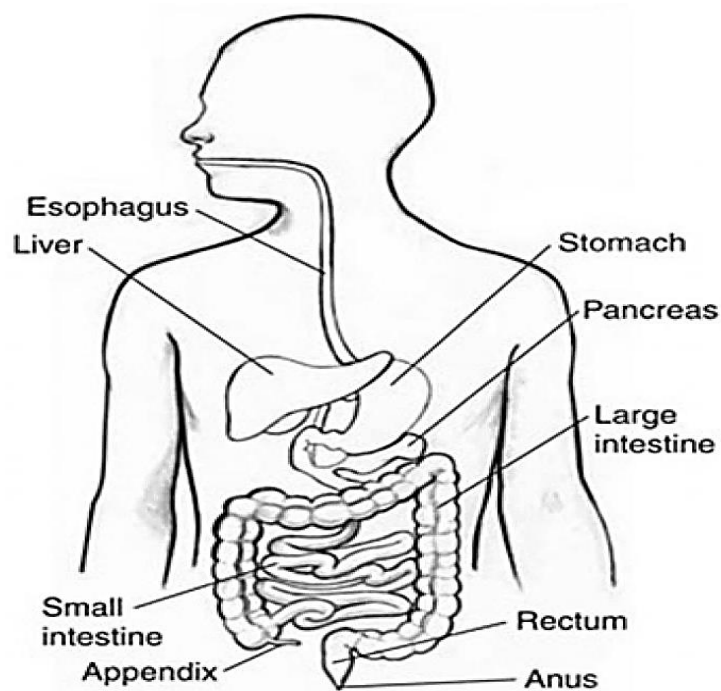
D

If you need to change your answer, erase it and circle your new answer.

4. If you cannot answer a question leave it and move on to the next one. You will come back to it later if you have more time.

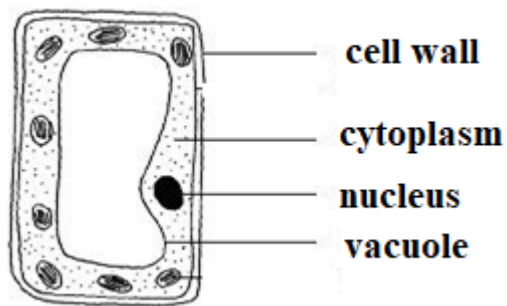
## LIFE PROCESSES

USE THE DIAGRAM BELOW TO ANSWER QUESTIONS 1 – 2.

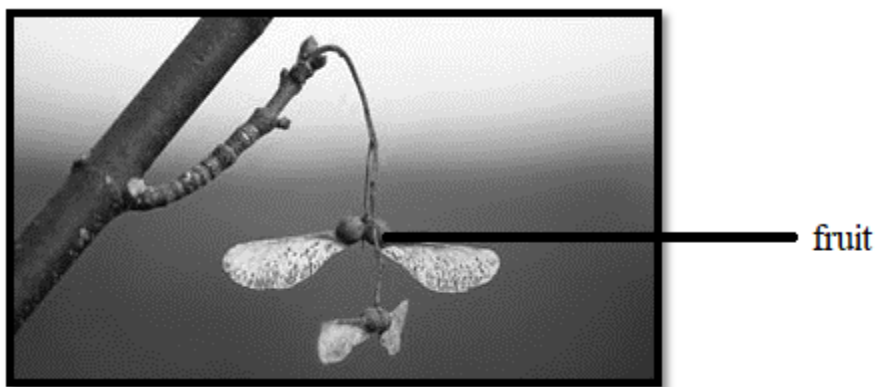


1. Which of the following organs is responsible for the absorption of nutrients into the blood?
  - A. large intestine
  - B. small intestine
  - C. stomach
  - D. appendix
  
2. Jack ate bread and cheese for breakfast. In which organ will the digestion of cheese **FIRST** take place?
  - A. large intestine
  - B. stomach
  - C. small intestine
  - D. liver

USE THE DIAGRAM BELOW TO ANSWER QUESTIONS 3 – 4.



3. The diagram shown above represents a/ an
- A. organ
  - B. tissue
  - C. system
  - D. cell
4. The **MAIN** function of the nucleus is to
- A. control the production of proteins
  - B. release energy from organs
  - C. transport materials throughout the organism
  - D. control all activities of the cell
5. Photosynthesis is the
- A. production of food in the green parts of plants
  - B. release of water vapour from the leaves of the plants
  - C. upward movement of water from the roots to the stem
  - D. production of energy and Carbon Dioxide in the leaves
6. Jamilla observed the following fruit on a tree, as seen below.



Based on its physical appearance, she can conclude that its seed would be dispersed **MAINLY** by

- A. water
- B. wind
- C. sand
- D. animals

7. Rainforests are important because,
- A. rain mostly falls in the rainforests
  - B. animals compete with humans for oxygen
  - C. plants in the forest help turn oxygen to carbon dioxide
  - D. plants in the forest turn carbon dioxide into clean air
8. Study the table below then answer the question.

TYPE OF RELATIONSHIP	EXPLANATION
autotrophic	use energy from the sun to make food
parasitism	one organism benefits while the other suffers
symbiosis	both organisms benefit
commensalism	only one organism benefits but the other does not suffer

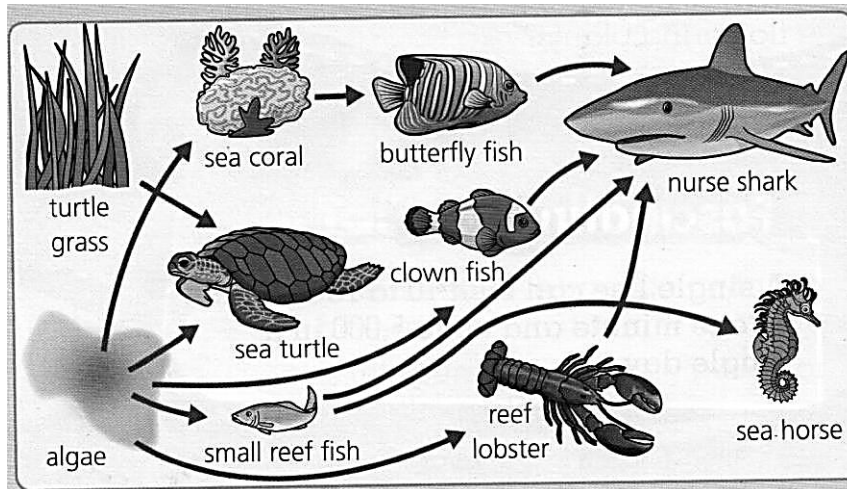
What type of relationship does the picture below show?



- A. autotrophic
  - B. parasitism
  - C. symbiosis
  - D. commensalism
9. A flea feeds on the blood of a dog. The dog is considered a
- A. host
  - B. parasite
  - C. habitat
  - D. pest

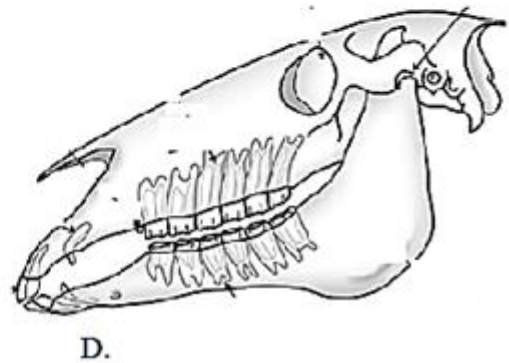
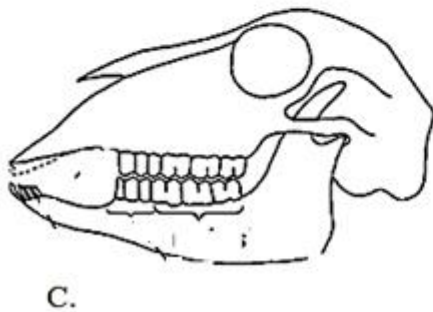
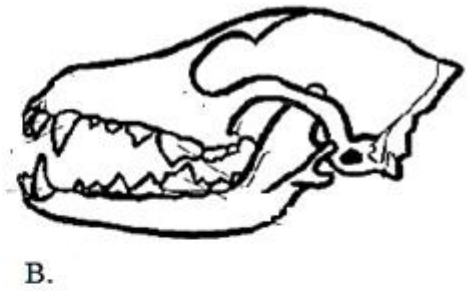
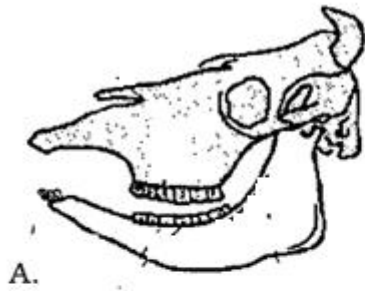


**STUDY THE DIAGRAM BELOW TO ANSWER QUESTIONS 10 - 11.**



10. The diagram shown above is an example of a/ an
- A. food web
  - B. food chain
  - C. ecosystem
  - D. environment
11. Which organism, in the diagram, is an example of a secondary consumer?
- A. clown fish
  - B. nurse shark
  - C. sea coral
  - D. turtle grass
12. The ability for an organism to blend into its surroundings is called
- A. symmetry
  - B. reproduction
  - C. camouflage
  - D. respiration
13. Mary noticed that when she became partially blind, her sense of hearing improved. This increased sensitivity to sound in her environment could be explained as an example of
- A. hearing loss
  - B. adaptation
  - C. sound control
  - D. night blindness

14. Which of the following skulls shown below would **MOST LIKELY** represent the skull of a lion?

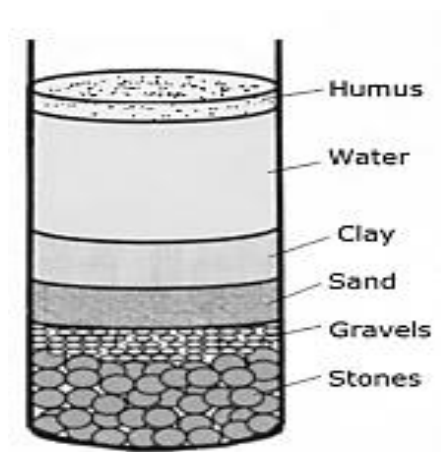


15. If an animal cannot adjust to the changes in its environment, it is likely that \_\_\_\_\_ will occur.
- A. hibernation
  - B. camouflaging
  - C. metamorphosis
  - D. extinction

### **EARTH AND SPACE**

16. The instrument used to measure air pressure is called the
- A. anemometer
  - B. barometer
  - C. thermometer
  - D. hydrometer
17. The Earth is getting \_\_\_\_\_ because of the damage done to the Ozone Layer.
- A. cooler
  - B. smaller
  - C. warmer
  - D. larger

18. Which one of these factors is **NOT** considered when describing the climate of a region?
- A. population of the region
  - B. sea level of the region
  - C. location from the equator
  - D. amount of precipitation
19. Joshua travelled to a region where there were; periods of warm and cold temperatures, most plants lost their leaves during a specific time of year and the houses had central air-conditioning and heating. We can conclude that Joshua visited a country in the \_\_\_\_\_ Region.
- A. Polar
  - B. Tropical
  - C. Temperate
  - D. Sub polar
20. The soil sample shown in the diagram below is an example of



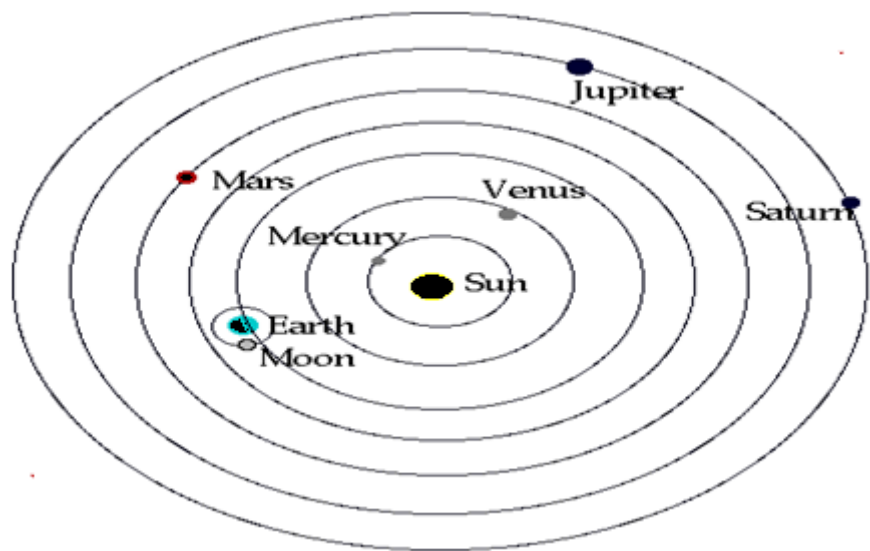
- A. silty soil
  - B. clayey soil
  - C. sandy soil
  - D. loamy soil
21. Soil washed into the sea can be a serious problem because
- A. corals will die
  - B. sea plants will grow more
  - C. the sea will heat up
  - D. people will get muddy when they swim
22. Which one of these is **NOT** an effective method of reducing soil erosion?
- A. replanting
  - B. contour farming
  - C. watering
  - D. terracing

23. Henry thinks that the best way to reduce the amount of garbage his family produces is to burn all of it. What is the **MAIN** reason why this is **NOT** the best method to discard waste?



- A. It is a lot of work and his clothes will smell of smoke.
- B. Burning some waste materials releases toxins into the air.
- C. A fire creates too much heat especially on a hot day.
- D. Biodegradable materials are too difficult to burn.

**STUDY THE DIAGRAM BELOW TO ANSWER QUESTIONS 24 - 25.**



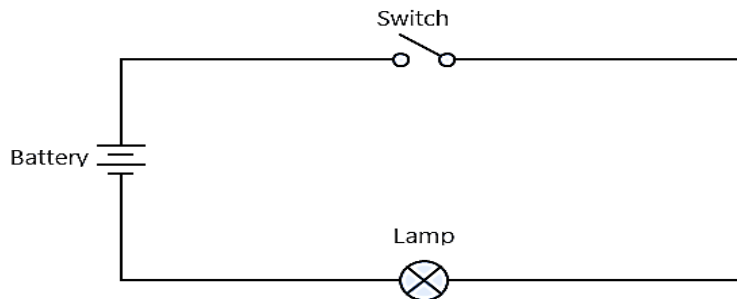
24. Which planet has the **hottest** temperature?
- A. Mars
  - B. Mercury
  - C. Venus
  - D. Uranus
25. Which planet will take the **longest** time to revolve around the sun?
- A. Venus
  - B. Earth
  - C. Mercury
  - D. Saturn

## PHYSICAL SCIENCE

26. Zinc, Aluminium and Copper are all

- A. conductors
- B. insulators
- C. vacuums
- D. circuits

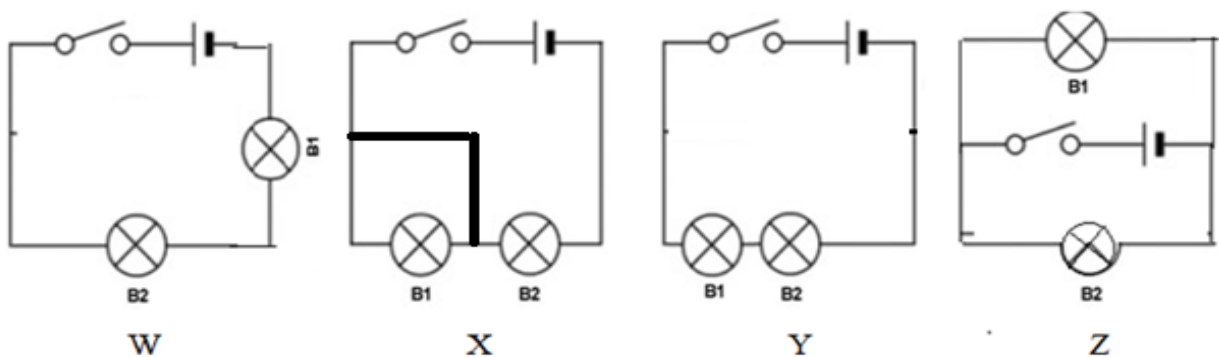
USE THE DIAGRAM BELOW TO ANSWER QUESTION 27.



27. The diagram above represents a/ an

- A. electromagnetic field
- B. electrical circuit
- C. main switch
- D. magnetic field

USE THE DIAGRAM BELOW TO ANSWER QUESTIONS 28 – 29



28. In which diagram (when the switch is closed), will bulb **B1** light if bulb **B2** breaks?

- A. W
- B. X
- C. Y
- D. Z

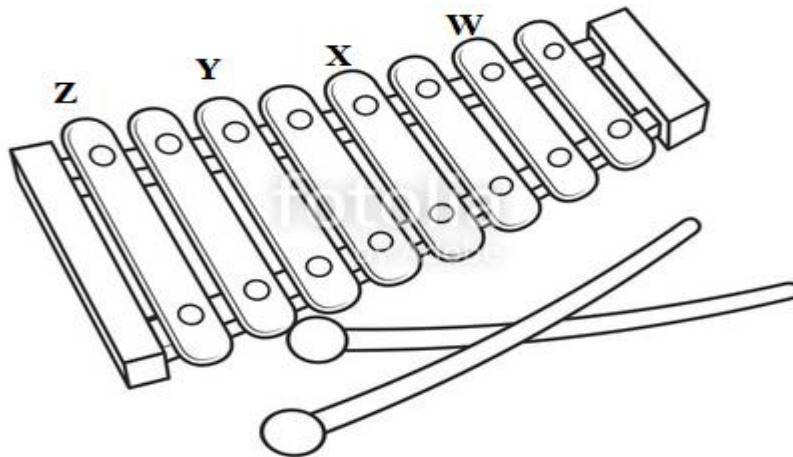
29. When the switch is closed in the diagrams above, the following energy transfer occurs.

- A. Electrical → magnetic → light
- B. Chemical → light → magnetic
- C. Chemical → electrical → light
- D. Electrical → light → chemical

30. The following methods can be used to help lower an electricity bill **EXCEPT**

- A. using florescent bulbs instead of solar bulbs
- B. purchasing clothes that uses less ironing
- C. using a solar heater instead of an electrical heater
- D. reducing the number of times the refrigerator is opened.

31. A xylophone shown below, is struck on the bars labelled; **W, X Y and Z**. Based on this diagram, which bar would produce the highest pitch?



- A. W
- B. X
- C. Y
- D. Z

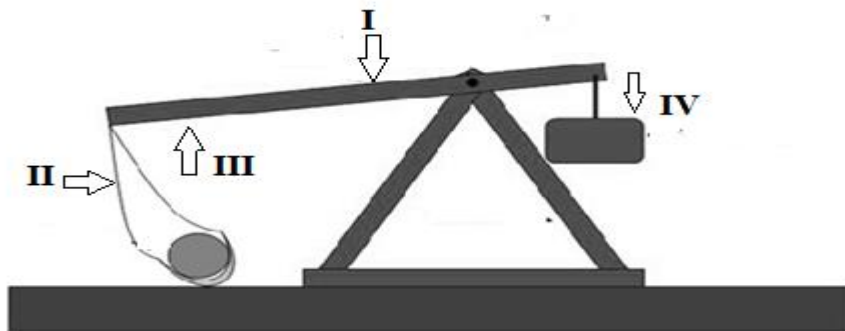
32. Gravity is a \_\_\_\_\_ force.

- A. pushing
- B. twisting
- C. pulling
- D. compressing

33. Mr. Jones needed to find an easy way to carry Sarah, his daughter. He made a simple machine as shown below.  
This machine can be classified as a \_\_\_\_\_ class lever.

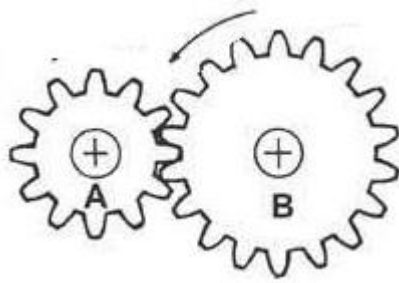


- A. first  
B. second  
C. third  
D. fourth
34. Before there were cranes, the Romans used a machine, shown below, to lift heavy boulders. Which of these points, **I**, **II**, **III** or **IV** should **effort** be applied, to easily lift the load?



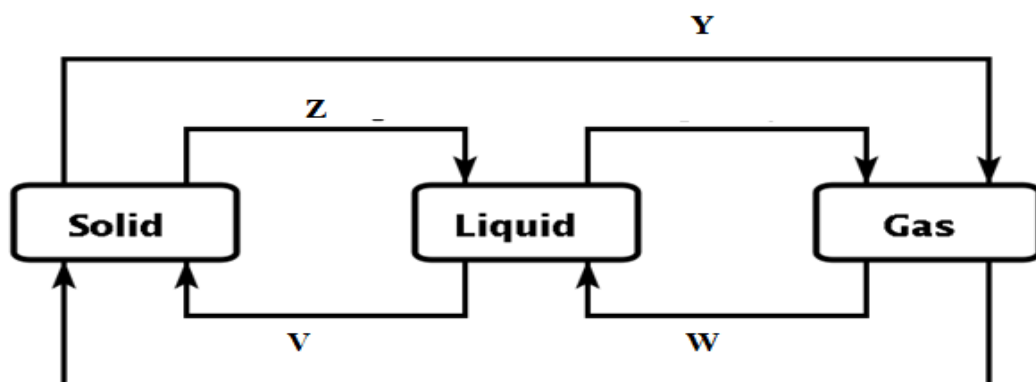
- A. I  
B. II  
C. III  
D. IV

35. Two gears are set up together, as shown below.



If **gear B** is turned in an anti-clockwise direction, in what direction do you think **gear A** will turn?

- A. clockwise
  - B. anti-clockwise
  - C. It will not turn because it is too small.
  - D. anti-clockwise then clockwise
36. Which one of the following is an example of a solution when mixed together?
- A. sugar and water
  - B. salt and pepper
  - C. sand and rocks
  - D. oil and water
37. An example of a **reversible** change of state is
- A. burning wood
  - B. frying an egg
  - C. freezing water
  - D. cooking rice
38. Study the diagram below and answer the question that follows.



The change of state, which occurs at **Y** is called

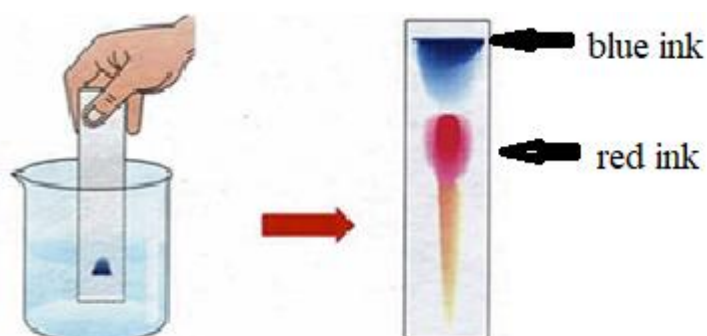
- A. evaporation
- B. condensation
- C. freezing
- D. sublimation



39. The process responsible for the formation of the weather condition labelled Y is:



- A. evaporation  
B. condensation  
C. precipitation  
D. filtration
40. Filter paper with a dot of black ink was dipped into a solvent. The following colours appeared on the paper after 5 minutes. This method of separation is known as



- A. dipping  
B. distillation  
C. filtration  
D. chromatography

### **AGRICULTURE SCIENCE**

41. Which of these would compete with a farmer's crops for important nutrients?
- A. weed  
B. pests  
C. birds  
D. rodents

42. Study the table below and answer the question that follows.

Soil Sample	Particle size	Colour	Texture
W	big	grey	gritty
X	Very small	Reddish brown	sticky
Y	Small	Dark brown	fine
Z	Very large	Greyish brown	rough

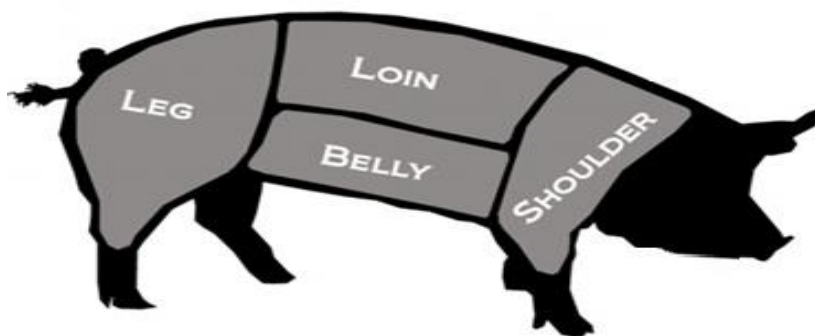
Which of the following soil types above can be described as clayey soil?

- A. W
  - B. X
  - C. Y
  - D. Z
43. A nitrogen compound (found in fertilizers), can be found in which ONE of the following plants?
- A. corn
  - B. pigeon peas
  - C. pumpkin
  - D. cocoa
44. Sometimes farmers plant seeds into seed boxes then later place them into the ground. This method of growing crops is known as



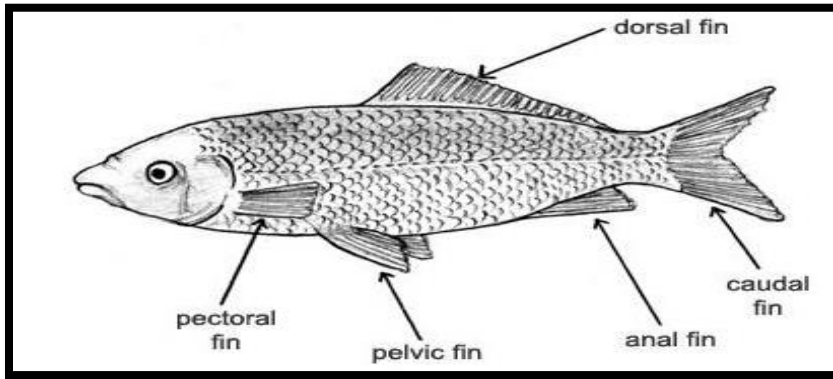
- A. shift agriculture
  - B. crop rotation
  - C. transplanting
  - D. cropping
45. Which one of following plants is cultivated using suckers?
- A. orange
  - B. pawpaw
  - C. cocoa
  - D. banana

46. The Grade 6 class of the Hill Primary School went into their school garden and noticed that the seedlings' stems were cut and the leaves appeared to have holes. This damage was most likely caused by
- A. leafspot
  - B. mole crickets
  - C. fumagine
  - D. crown rot
47. Which of the following is **NOT** usually added to make soil more fertile?
- A. manure
  - B. humus
  - C. fertilizer
  - D. water
48. Trawling (a fishing method) can be described as using
- A. long fishing lines with bait attached
  - B. spears made with sharpened stone heads
  - C. huge baskets dragged along the sea bed
  - D. huge nets dragged behind a ship or boat
49. Based on the diagram below, which part of the pig is used to make ham?



- A. shoulder
- B. loin
- C. leg
- D. belly

50. Study the diagram and answer the following question.



Which fin allows the fish to move **forward**?

- A. pelvic
- B. anal
- C. caudal
- D. dorsal

***END OF EXAMINATION***

*Ministry of Education & Human Resource Development*  
*Dominica*

*Grade 6*  
*National*  
*Assessment*  
*May 30, 2019*

**TIME: 75 Minutes**

©CMEU/2019

**DO NOT TAKE THIS PAPER OUT OF THE EXMINATION**

*Social Sciences*

**SOCIAL SCIENCES EXAMINATION**  
**1HR 15 MINUTES**

READ THE FOLLOWING INSTRUCTIONS BEFORE ATTEMPTING THE TEST.


- 1. THIS PAPER CONTAINS 50 QUESTIONS.
- 2. FOR EACH QUESTION, CIRCLE THE LETTER ON THE ANSWER SHEET THAT MATCHES THE ANSWER YOU HAVE CHOSEN.
- 3. USE A PENCIL TO SHADE IN THE CORRECT ANSWER.

**EXAMPLE:**

1. Which of these is a primary product?

A. soap  
B. pasta  
C. banana  
D. fertiliser

The correct answer is banana, letter C. On your answer sheet you mark:

A.                      B.                                            D

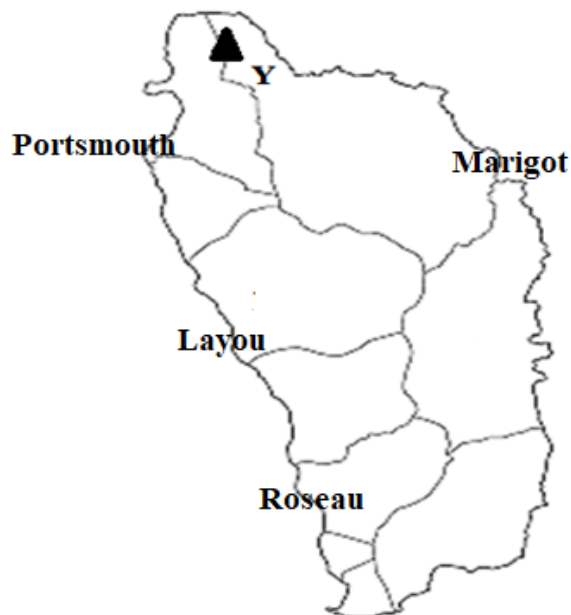
If you need to change your answer, erase it and circle your new answer

- 4. IF YOU CANNOT ANSWER A QUESTION LEAVE IT AND MOVE ON TO THE NEXT ONE. YOU WILL COME BACK TO IT LATER IF YOU HAVE MORE TIME

**DO NOT TAKE THIS PAPER OUT OF THE EXAMINATION ROOM**

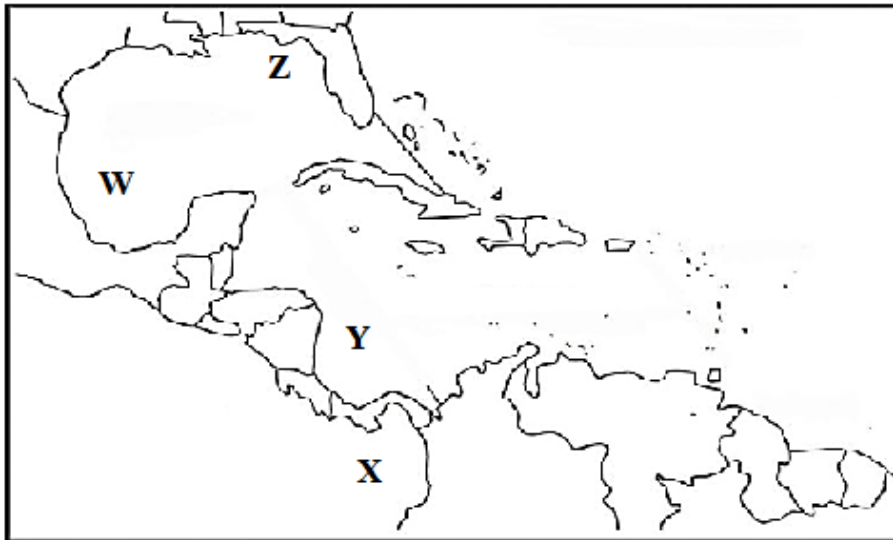
## **LOCATION**

**USE THE MAP BELOW TO ANSWER QUESTIONS 1 – 3.**



1. The mountain labelled Y is most likely
  - A. Morne Anglais
  - B. Morne Aux Diabes
  - C. Morne Diablotin
  - D. Morne Espanol
  
2. Which of the following villages shown above was named by the Kalinago people?
  - A. Portsmouth
  - B. Marigot
  - C. Layou
  - D. Roseau
  
3. Jesse will be travelling from Roseau to Marigot. What direction should she travel?
  - A. South West
  - B. North East
  - C. East
  - D. North

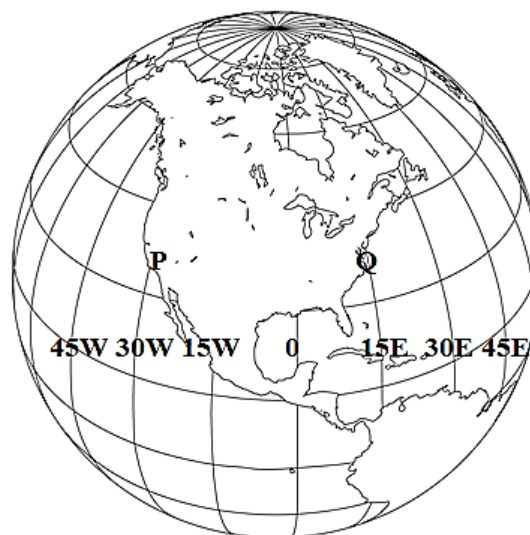
4. Use the diagram to answer the question that follows.



The Gulf of Mexico is the area labelled

- A. W
  - B. X
  - C. Y
  - D. Z
5. Which of these is a capital city of an island in the Greater Antilles?
- A. Nassau
  - B. St. John's
  - C. Tobago
  - D. Havana

**USE THE DIAGRAM BELOW TO ANSWER QUESTIONS 6 – 7.**



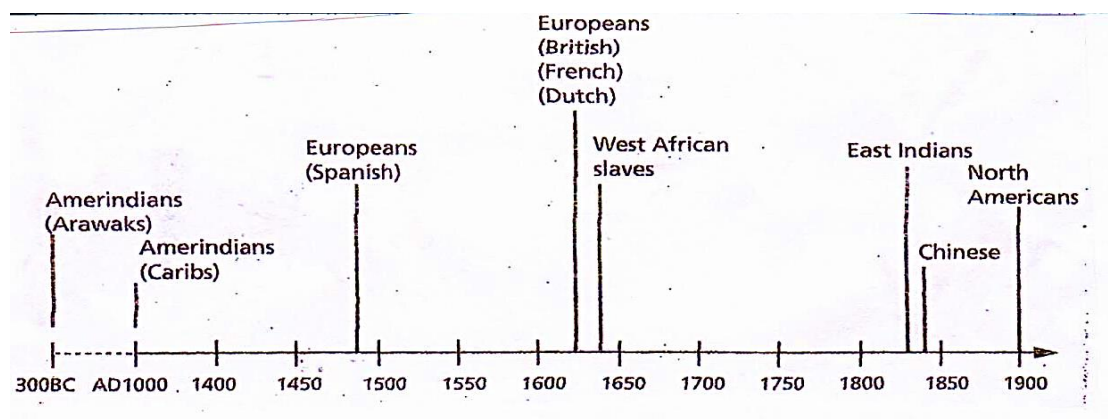
6. The lines shown on the diagram above that runs from north to south are known as
- A. Lines of Latitude
  - B. Orion Belt
  - C. Equator
  - D. Lines of Longitude



7. It is 7 pm at place **Q**. What time will it be at place **P**?
- A. 4 pm
  - B. 6:15 pm
  - C. 7:45 pm
  - D. 10 pm
8. Why are the foods eaten and the religious practices of our Caribbean people similar to other cultures?
- A. Caribbean people want to live like other nations of the world.
  - B. Food and religion are the most important parts of Caribbean culture.
  - C. Early settlers brought their traditions with them to the Caribbean.
  - D. Early settlers became bored with their own food and religion.
9. The artifacts shown below were most likely **NOT** used by the



- A. Asians
  - B. Africans
  - C. Europeans
  - D. Amerindians
10. Study the timeline below to answer the question that follows.



During which century did the Spaniards arrive in the Caribbean?

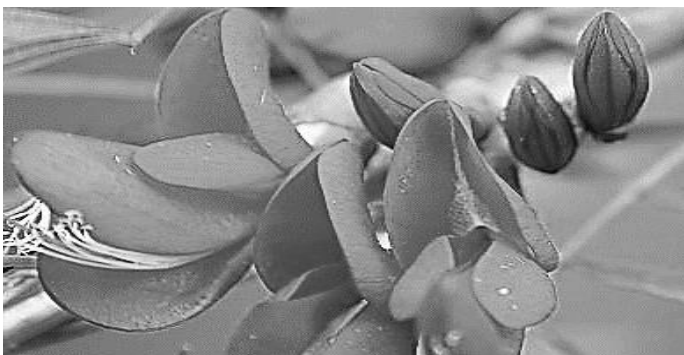
- A. 15<sup>th</sup>
- B. 14<sup>th</sup>
- C. 13<sup>th</sup>
- D. 12<sup>th</sup>

## CIVIC IDEALS AND PRACTICES

11. There are different clothing items below labelled, **A, B, C & D**. Which one of these correctly labels the jipon?



12. Creole Day is celebrated every
- A. 3<sup>rd</sup> November
  - B. Friday before Carnival
  - C. last Friday in October
  - D. 31<sup>st</sup> October
13. Which of the following musical genres originated from Dominica?
- A. Calypso
  - B. Cadence-lypso
  - C. Soukous
  - D. Zouk
14. The National Flower, the Bwa kwaib, as seen below, usually blooms every



- A. January
- B. April
- C. October
- D. February

15. This activity promotes Dominica’s Tourism and creates a platform for indigenous Dominican music.
- A. National Calypso Show
  - B. Dominica National Queen Show
  - C. World Creole Music Festival
  - D. Dominica Jazz Festival
16. David represented Dominica overseas on the National Football team many times. He is considered an ambassador. Which word would **BEST** describes David?
- A. patriotic
  - B. official
  - C. traveler
  - D. traitor
17. Nomination Day is the day when someone
- A. is declared the leader of the country
  - B. goes to vote for a candidate of his/her choice
  - C. formally declares his/her intent to contest an election
  - D. is sworn into the House of Assembly
18. Which of the following is true about the voters in the electoral process?
- A. Voters can vote at designated polling stations.
  - B. After placing an X on the ballot, the voter keeps the paper.
  - C. Voters get ballots before their names are checked on the list.
  - D. Voters must write their names on the ballot.
19. The results of a general election on Kwapo Island is as follows:

POLITICAL PARTY	NUMBER OF SEATS WON
Flamboyant	6
Rose	7
Valley	9

How many constituencies are there on the island?

- A. 22
- B. 21
- C. 13
- D. 3

20. Which of the following is **NOT** the responsibility of citizens?
- A. serve as jurors
  - B. carry guns to protect themselves
  - C. respect the opinions of others
  - D. respect the authority of the elected government
21. Which of the following is **NOT** the role of the leader of the government?
- A. appoint members of Cabinet
  - B. oversee the work of the civil service
  - C. manage the relationship between government and opposition
  - D. always agree to the ideas of his cabinet members
22. Which of the following represents the abbreviations for an organization within the Caribbean Community (CARICOM)?
- A. CNN
  - B. OAS
  - C. CSME
  - D. PAHO
23. Non-Government Organizations are organizations which focus on activities that
- A. promote citizen participation
  - B. donate money to government agencies
  - C. conduct religious activities
  - D. organize national celebrations
24. The **BEST** description of cooperation is people
- A. working independently
  - B. finishing a task
  - C. following a leader
  - D. working together
25. The NCCU located in Roseau is an example of a/ an
- A. bank
  - B. trade union
  - C. cooperative
  - D. insurance company

26. The logo shown below represents the



- A. United Nations  
B. Organization of the Eastern Caribbean State  
C. Caribbean Examination Council  
D. Commonwealth Nations
27. One advantage of being a member of a cooperative society is that the members have \_\_\_\_\_ debts.
- A. joint  
B. limited  
C. endless  
D. several
28. Mr. John is a banana farmer who is unable to compete with the larger companies that also export bananas in the region. He is not alone. Many farmers in his surrounding village feel the same way. They decided to work together as a unit to compete against these larger companies. This is an example of



- A. leadership  
B. governance  
C. cooperation  
D. greed

## **RESOURCES**

29. How can we help to reduce the impact of air pollution?
- A. stop producing cars.
  - B. walk more, drive less.
  - C. wear facemasks if we live in the cities.
  - D. relocate to the countryside.
30. Which is **NOT** a direct effect of global warming?
- A. rise in sea levels
  - B. melted glaciers and ice sheets
  - C. stronger hurricanes
  - D. lowered atmospheric temperatures
31. Crude oil, petrol and hydro power can **ALL** be grouped as
- A. energy sources
  - B. minerals
  - C. materials
  - D. Natural resources
32. Which of the following is a **non-renewable** resource in Dominica?
- A. sunlight
  - B. forest
  - C. rivers
  - D. tarish
33. The process of using resources wisely is called
- A. sustainability
  - B. overuse
  - C. manufacturing
  - D. non -pollutant
34. What is the **MAIN** reason for having a hunting season for our wildlife?
- A. To give interested people a chance to hunt.
  - B. We must wait for full moon nights so hunters can see the animals.
  - C. To give our wildlife enough time to mate and reproduce.
  - D. The weather is very cool during hunting season.
35. When we use renewable resources, this affects their
- A. cost
  - B. power
  - C. efficiency
  - D. availability

**STUDY THE PICTURE BELOW AND ANSWER QUESTION 36.**



36. Which one of these messages is represented in the illustration shown above?
- A. Fill your piggy bank with water.
  - B. Water conservation is important
  - C. We will need to buy water in the future
  - D. Use your piggy bank savings to buy water only.
37. Which organization helps Caribbean countries trade easily with one another?
- A. Cooperatives
  - B. Fair Trade
  - C. WTO
  - D. CARICOM
38. Many islands, like Dominica, St. Lucia and Antigua have changed the way they earn revenue for their countries. Which one of the following is their **MOST** modern form of revenue?
- A. bananas
  - B. tourism
  - C. sugar
  - D. minerals
39. Which government department is responsible for the management of taxes and most government fees in Dominica?
- A. Public Service Union
  - B. Immigration
  - C. Inland Revenue Division
  - D. Public Service Commission
40. Which of the following is a financial benefit of tourism?
- E. increased flow of foreign currency
  - F. learning new cultures
  - G. setting up of recreational places
  - H. increased pride traditional arts and craft

## **SOCIAL ISSUES AND CHANGE**

41. The type of family shown in the picture below is described as



- A. elaborate  
B. nuclear  
C. extended  
D. long distance
42. Dion chooses to use the computer to research for an assignment instead of playing outside. The life skill that she demonstrates is
- A. empathy  
B. self – awareness  
C. problem solving  
D. decision making
43. Which one of these situations **DOES NOT** demonstrate resilience?
- A. building climate resistant houses  
B. disposing garbage properly  
C. attempting new agricultural practices  
D. building bigger residential homes
44. Racial differences refer to differences in the
- A. way we live  
B. things we eat  
C. clothes we wear  
D. way we look



45. The picture below **BEST** illustrates each of the following **EXCEPT**



- A. social drinking
  - B. depression
  - C. alcoholism
  - D. drug abuse
46. Which of the following is **BEST** illustrated in the picture below?

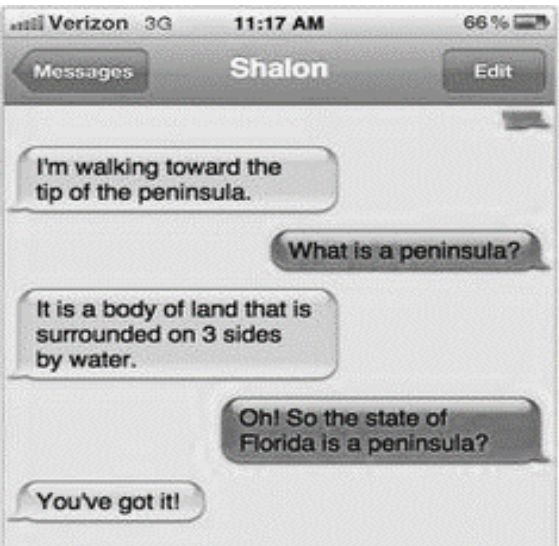


- A. bravery
  - B. peer pressure
  - C. bullying
  - D. peer support
47. The logos shown below represents examples of



- A. cellular phones
- B. social media
- C. internet data
- D. search engines

USE THE PICTURE BELOW TO ANSWER QUESTIONS 48 – 49.



48. Which form of communication is shown below?
- A. verbal
  - B. written
  - C. physical
  - D. common
49. This **form** of communication has changed from 20 years ago because it is now \_\_\_\_\_ compared to before.
- A. social
  - B. legal
  - C. instant
  - D. accurate
50. The picture below **BEST** illustrates how people’s dependence on \_\_\_\_\_ has increased.



- A. elders
- B. technology
- C. transportation
- D. seats

*END OF EXAMINATION*